

- 3D Range - .4 mi
- Blackberry Meadow - .5 mi
- Holly - .8 mi
- Holly Shortcut - .35 mi
- Maze
- Meadow Loop - .25 mi
- Old Farm Lane - .25 mi
- Osage - 1 mi
- Peaks Mill - .25 mi
- Raceway Spur - .15 mi
- Sky Trail - .6 mi
- Spring Spur - .25 mi
- Upland Trail - .2 mi

Osage Trail

Total Distance:
1 mile loop

Elevation Change:
260 ft.

This is one of the longer trails at the park. It is a beautiful trail that goes up and back down the hill connecting the upper parking lot and the lower / falls parking lot (via Holly Loop). Use the top section of the Holly Loop to create the full loop.



Peaks Mill Trail

Total Distance:
.25 miles one way

Elevation Change:
50 ft.

This short trail connects the Holly Trail and Osage Trail to Peaks Mill School.

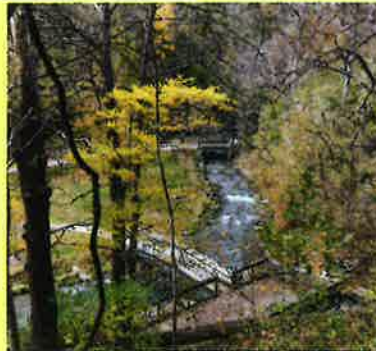


Raceway Spur

Total Distance:
.15 miles one way

Elevation Change:
50 ft.

Explore the top of the waterfall via this short trail. Accessed from the lower parking lot, this trail takes you above the waterfall and behind the remains of the old reservoir dam. It ends in the Meadow which used to be the bottom of the reservoir.



Sky Trail

Paved

Total Distance:
.61 mile loop

Elevation Change:
30 ft.

The Sky Trail is one of the most popular trails. It is paved and appropriate for strollers and wheelchairs. It is right off of the upper parking lot. It is exactly one kilometer in length. There are views of downtown Frankfort and Fort Hill and even the Capitol dome if the weather is right. The Maze, Osage Trail and Old Farm Lane can be accessed from Sky Trail.

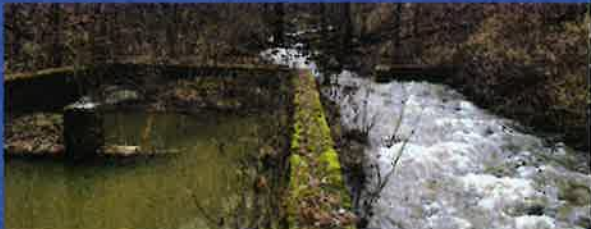


Spring Spur

Total Distance:
.5 miles out and back

Elevation Change:
virtually none

This flat, unpaved trail follows a creek to a man-made water management feature. It is accessed from the lower parking lot via the Meadow Loop. This trail can be very wet, depending on the weather.



Upland Trail

Total Distance:
.2 miles one way

Elevation Change:
75 ft.,
steep steps

This steep, short trail connects the lower parking lot to the Osage Trail. There are man-made steps on part of this trail.



Old Farm Lane

Total Distance:
.25 miles one way

Elevation Change:
100 ft.

You can still walk on this former farm road, which leads from the Sky Trail, past the Osage Trail to an old barn.

